

# BC-10 PLUS BAKING CONTRAST METER

Monitor and control the color of baked, fried, smoked, and processed foods, including ingredients. Establish specifications for crust, crumb, and ingredients. Ensure consistency in product appearance.

The food industry is a highly competitive business with production becoming a more exacting science. Consumers want their products to have a consistent appearance from purchase to purchase, and the color of your products will directly affect the sale of those products. Designed for contact measurements, Konica Minolta's BC-10 Plus provides reliable, precise color measurements through all stages of food production. The BC-10 Plus is not affected by lighting conditions, and eliminates inconsistencies and obstacles such as "human eye" subjectivity.

▶ **PRODUCTION CONTROL**

Controls specifications of crust color, crumb color, and related formulation adjustments. Simplifies co-packing procedures.

▶ **LABORATORY AND R&D ANALYSIS**

Rheology, product research and development specifications.

▶ **PREVENTIVE MAINTENANCE**

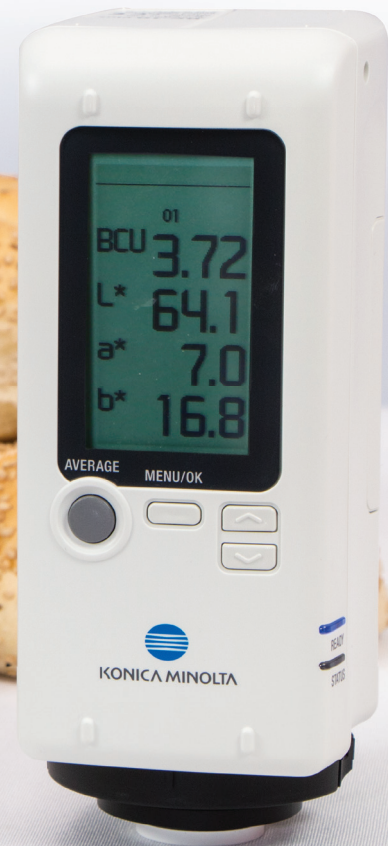
Oven, Fryer, smoker and cooker adjustment. Top vs. bottom differential, and lateral heat dispersion.

▶ **SALES & MARKETING**

Establishes customer specifications and settles customer complaints.

▶ **TRAINING**

Trains employees to assess color quality in minutes, with high degrees of accuracy.



## SIMPLE OPERATION

Fast, easy, and accurate for production-level environments. Even first-time users can operate the BC-10 Plus quickly and easily.

1. Switch on the power.
2. Perform white tile calibration.
3. Place on product and press button.
4. Measurement results are displayed immediately.

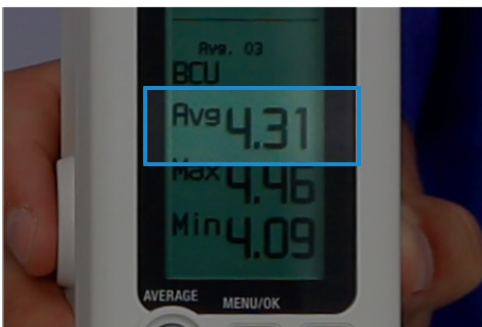
## DISPLAY EXAMPLES

### BAKING CONTRAST UNITS (BCU)



A Baking Contrast Unit is the measure of the lightness or darkness of a product. BCUs range from 0 for the darkest to 5.25 for the lightest. Each change of 0.1 BCU equals approximately one discernible shade to the human eye.

### AVERAGING FUNCTION



The BC-10 Plus takes as many measurements as required, and can store up to 16 readings at a time. To display the average of the stored readings, simply press the Average Button.

## CONVENIENT FUNCTIONS

1. Protective plastic plate on measurement aperture allows direct contact measurements of products and ingredients without the need for filling a cell, test tube, or petri dish.



2. Using the PC application stored in the BC-10 Plus, you can set the instrument to store data internally (Memory capacity: 1000 data), transfer stored data to the PC, or take measurements from the PC.

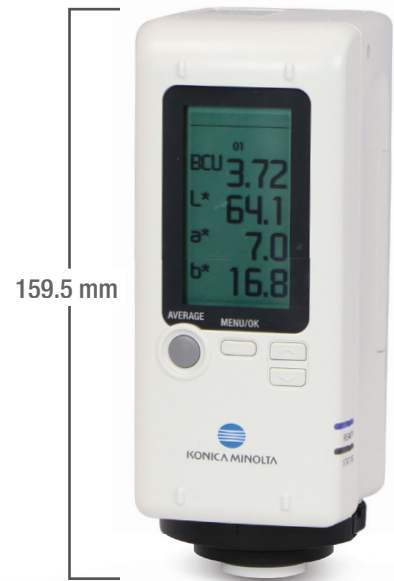


3. By connecting a printer to the BC-10 Plus, you can print out measuring data.

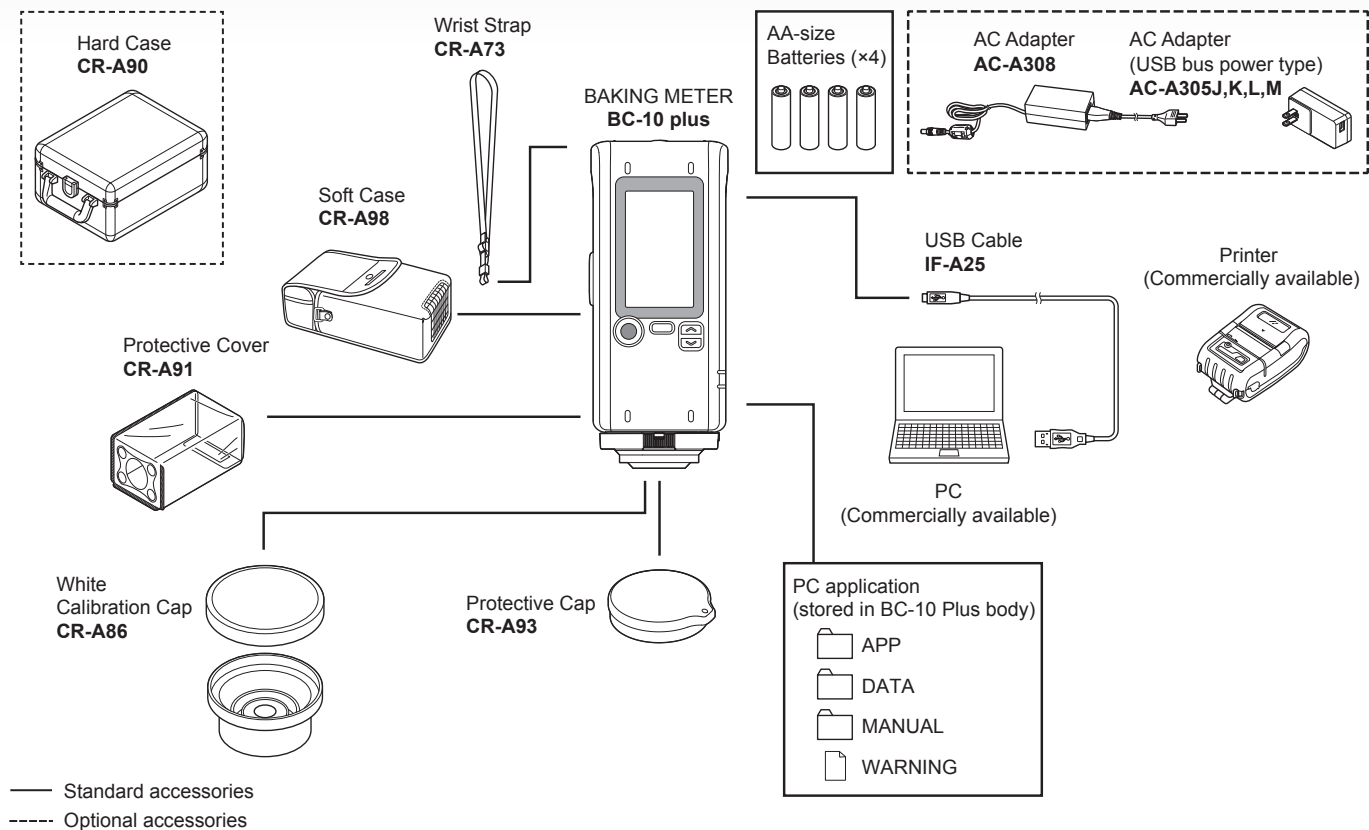


## RUGGED AND LIGHTWEIGHT

The durable BC-10 Plus is compact, lightweight, and fits comfortably in your hand. It is battery powered for optimum convenience - you can take the product to the meter or bring the meter to the product. Includes wrist strap for added security.







Specifications	Baking Meter BC-10 Plus
Illumination/viewing system	8° : di (8° illumination angle/diffuse viewing: specular component included) (conforms to DIN 5033 Teil 7, JIS Z 8722 condition d, ISO 7724/1, CIE No. 15, ASTM E 1164)
Detector	Silicon photocells (6 pcs.)
Display Range	BCU: 0.01 to 5.25
Light Source	Pulsed xenon lamps
Measurement Time	Approx. 1 sec.
Battery Performance	Approx. 2,000 measurement at 10-sec. intervals when using alkaline-manganese batteries
Measurement Area	Approx. ø8 mm
Repeatability	Standard deviation within $\Delta E^*ab$ 0.1 (when a white calibration plate is measured 30 times at 10-second intervals)
Display Languages	English
Interface	USB 2.0
Observer	10° Standard Observer
Illuminant	D65
Displayed Data	Colorimetric data, average (up to 16 times)
Color Space	L*a*b*
Colorimetric Indexes	BCU
Data Memory	Sample data (up to 1,000)
Operation Temperature/Humidity Range	0 to 40°C, relative humidity 85% or less (at 35°C) with no condensation
Storage Temperature/Humidity Range	-20 to 40°C, relative humidity 85% or less (at 35°C) with no condensation
Power	4 AA-size alkaline dry batteries or nickel-metal-hydrate rechargeable batteries, USB bus power or special AC Adapter
Size (W x H x D)	66 x 159.5 x 85 mm
Weight	420 g (without batteries)

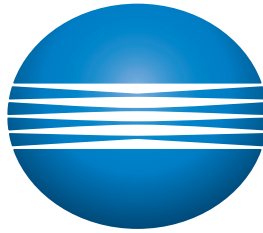
PC System Requirements  
 - OS: Windows 7 Professional 32bit, 64 bit, Windows 8 Pro 32bit, 64bit, Windows 8.1 Pro 32bit, 64bit, Windows 10 Pro 32bit, 64bit (English)  
 - The hardware of the computer system to be used must meet or exceed the recommended system requirements for compatible OS being used.  
 - One USB2.0 port is necessary.

SAFETY PRECAUTIONS

For correct use and for your safety, be sure to read the instruction manual before using the instrument.  
 ● Always connect the instrument to the specified power supply voltage. Improper connection may cause a fire or electric shock.  
 ● Be sure to use the specified batteries. Using improper batteries may cause a fire or electric shock.

LLOYD'S REGISTER-IRQA  
ISO 9001

JCA  
ISO 14001  
Certificate No. JQA-E-80027  
Registration Date: March 12, 1997



# KONICA MINOLTA

**KONICA MINOLTA, INC.**

Osaka, Japan

**Konica Minolta Sensing Americans, Inc.**

New Jersey, U.S.A

Phone: 888-473-2656 (in USA)  
201-236-4300 (outside USA)

Fax: 201-785-2482

**Konica Minolta Sensing Europe B.V.**

European Headquarter/ BENELUX

Nieuwegein, Netherlands

Phone: +31(0)30 248-1193

Fax: +31(0)30 248 1280

German Office

München, Germany

Phone: +49(0)89 4357 156 0

Fax: +49(0)89 4357 157 99

French Office

Roissy CDG, France

Phone: +33(0) 1 80 11 10 70

Fax: +33(0) 1 80 11 10 82

UK Office

Warrington, UK

Phone: +44(0) 1925 467300

Fax: +44(0) 1925 711143

Italian Office

Cinisello Balsamo, Italy

Phone: +39 02849488.00

Fax: +39 02849488.30

Swiss Office

Dietikon, Switzerland

Phone: +41(0)43 322 9800

Fax: +41(0)43 322 9809

Nordic Office

Västra Frölunda, Sweden

Phone: +46(0)31 7099464

Polish Office

Wroclaw, Poland

Phone: +48(0)71 73452- 11

Fax: +48(0)71 734 52 10

**Konica Minolta (CHINA) Investment Ltd.**

SE Sales Division

Shanghai, China

Phone: +86- (0)21 5489 0202

Fax: +86- (0)21-5489 0005

Beijing Office

Beijing, China

Phone: +86- (0)10-8522 1551

Fax: +86- (0)10-8522 1241

Guangzhou Office

Guangdong, China

Phone: +86- (0)20-3826 4220

Fax: +86- (0)20-3826 4223

Chongqing Office

Chongqing, China

Phone: +86- (0)23-6773 4988

Fax: +86- (0)23-6773 4799

Qingdao Office

Shandong, China

Phone: +86- (0)532-8079 1871

Fax: +86- (0)532-8079 1873

Wuhan Office

Hubei, China

Phone: +86- (0)27-8544 9942

Fax: +86- (0)27-8544 9991

**Konica Minolta Sensing Singapore Pte Ltd.**

Singapore

Phone: +65 6563-5533

Fax: +65 6560-9721

**Konica Minolta Sensing Korea Co. Ltd.**

Goyang-si, Korea

Phone: +82(0)2-523-9726

Fax: +82(0)31-995-6511

Addresses and telephone/fax numbers are subject to change without notice. For the latest contact information, please refer to the KONICA MINOLTA Worldwide Offices web page:

[KonicaMinolta.com/instruments/network](http://KonicaMinolta.com/instruments/network)